

**Client** AB Mauri Ltd

Mauri Products (part of AB Mauri) is one of the main yeast producers in the UK, supplying major baking and brewing companies from their site in Hull.

**Critical Issue**

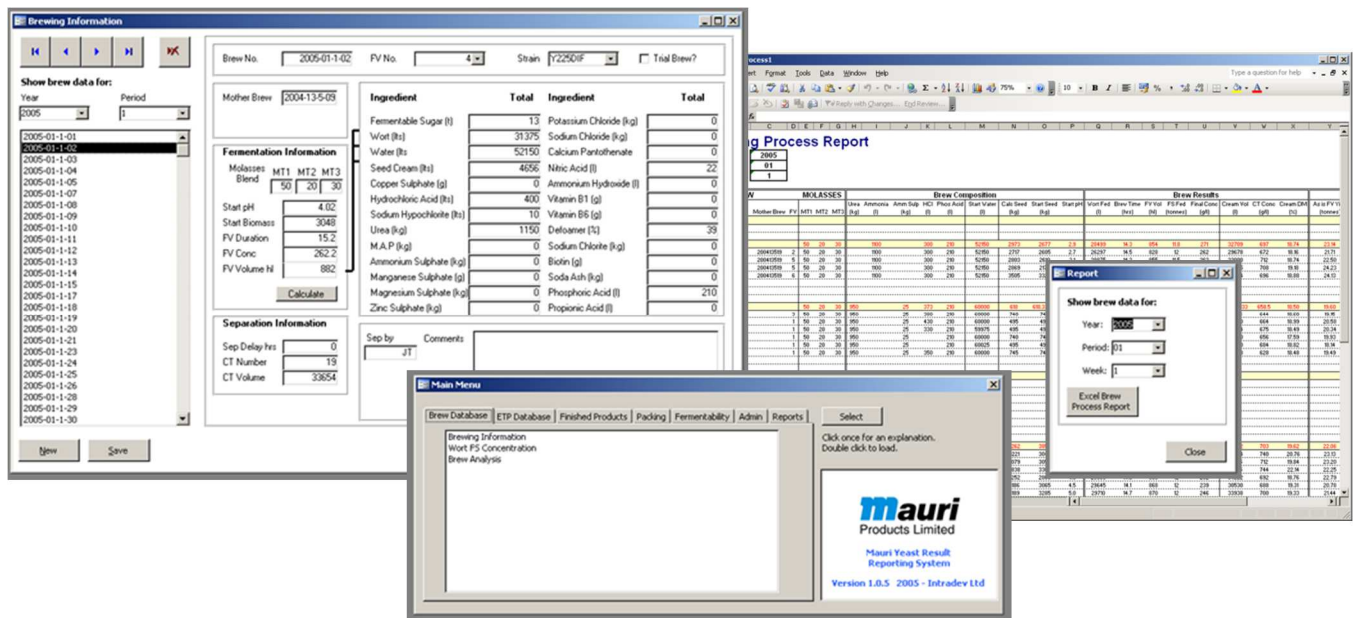
Producing yeast is a complex process, involving testing and recording of production parameters at various stages. Mauri had developed a number of databases and spreadsheets to monitor these figures, but these lacked integrated reporting and needed updating to reflect changing requirements by Mauri’s customers.

**Solution**

Intradev developed an integrated system called Mauri Yeast Results Reporting System of MYRRS. This system captures data throughout the production process and can generate various key quality reports and certificates of analysis for the products. The software was developed using Microsoft Access ‘front-ends’ connecting to central SQL Server database.

**Results**

Introduction of this system has allowed Mauri to generate the reports that it needs to effectively manage the business and has given the system an excellent foundation for further development.



“Our old systems recorded the data we needed but it was difficult to get an overall picture. We had to maintain the many different spreadsheets and databases to produce the reports we wanted. MYRRS has helped us to easily get the information that we need to manage the production process. Certificates of Analysis are now much more easily produced, saving us time and improving accuracy. Our staff like the new system which is easy to use and maintain.”  
**Rob Jenkins, Quality Manager, AB Mauri**

**Please contact us for a no obligation meeting to discuss how Intradev could develop a Custom Software Solution to meet the needs of your business**